

MIND THE GAPS

Presented by:



A new nonprofit dedicated to helping Floridians understand how Florida's behavioral health system works and how to advocate to make it better.

Your Co-Hosts



Amy McClellan

Board President, Florida Advocates for Behavioral Health
Board President, The Key Clubhouse of South Florida
Board Member, Florida Mental Health Advocacy Coalition
Mother and grandmother, children with mental illness

Maggie de Cambre Borges

Vice President of Operations for Behavioral Health and Program Director,
Florida HCA Woodmont Hospital
Board Member, Florida Advocates for Behavioral Health
Board Member, NAMI Broward County

Gayle Giese

President, Florida Mental Health Advocacy Coalition
Board Member, Florida Supportive Housing Coalition
Mother of adult child with mental illness



A nonprofit dedicated to helping Floridians understand how Florida's behavioral health system works and how to advocate to make it better.

FABH is a learning community with the mission to educate citizens on behavioral health issues and policies to improve the lives of individuals and families living with behavioral health conditions while decreasing stigma through increased understanding.

floridaadvocates.org

Florida Advocates for Behavioral Health is a tax-exempt organization under the Internal Revenue Code Section 501(c)3. Contributions to Florida Advocates for Behavioral Health are deductible as qualified charitable contributions.

Thank you to our sponsors!



Please note that the views expressed by the speakers in this webinar do not necessarily reflect those of Florida Advocates for Behavioral Health. Moreover, Florida Advocates for Behavioral Health does not endorse any treatments or therapies as expressed by the speakers.

MIND THE GAPS

Presented by:



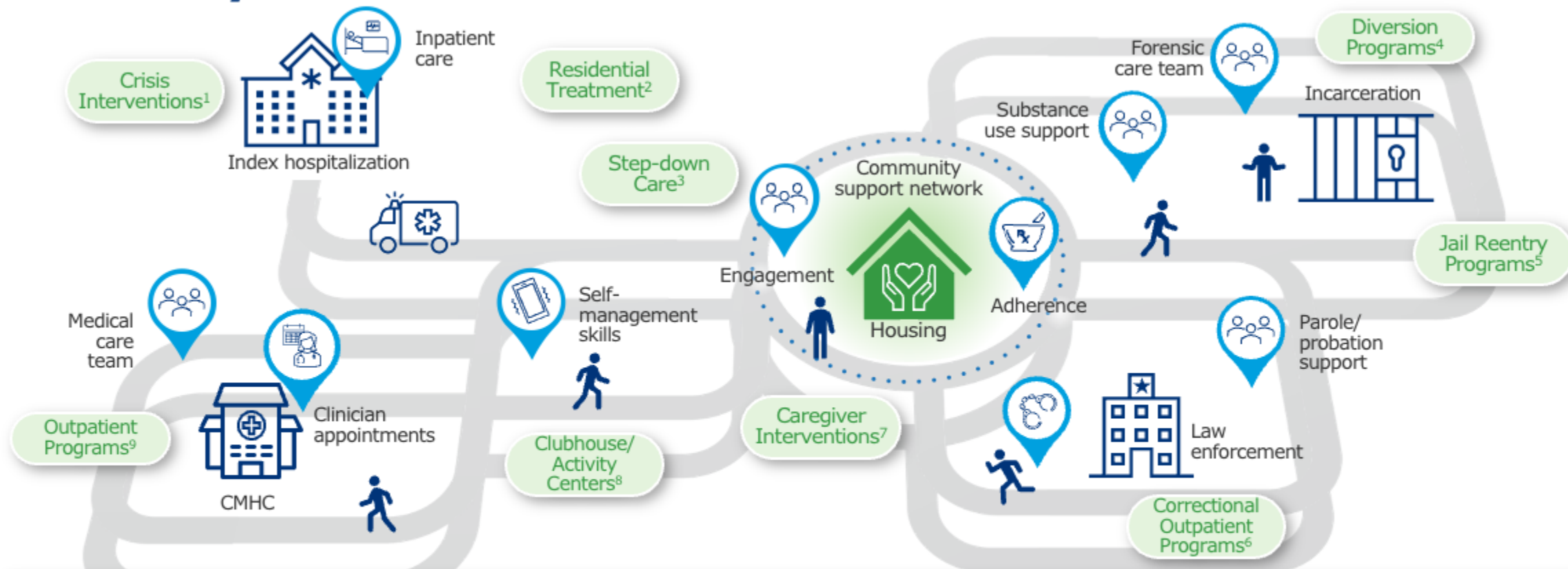
A new nonprofit dedicated to helping Floridians understand how Florida's behavioral health system works and how to advocate to make it better.

What Is the Gap Analysis?



- SB330 – Behavioral Health Teaching Hospitals Bill
- Detailed gap analysis of state system of care contracted by Department of Children and Families
- Ernst & Young contracted
- Short time frame
- Completed in January 2025

The recovery journey for an adult patient with schizophrenia is not always linear



Setbacks are a normal and common part of recovery for people with SMI^{10,11}

CMHC=community mental health clinic; SMI=serious mental illness. Graphic was created specifically for this presentation by R. Solomon and C. Luft.

References: 1. Campbell J et al. *Int J Prisoner Health*. 2017;13(3-4):207-212. 2. Harvey C et al. *Front Psychiatry*. 2019;10:383. 3. Finnerty MT et al. *Community Ment Health J*. 2015;51(1):85-95. 4. Leifman S, Coffey T. *CNS Spectrums*. 2020;25(5):659-666. 5. Buck DS et al. *Psychiatr Serv*. 2011;62(2):120-122. 6. Cummings MA et al. *CNS Spectrums*. 2020;25(5):701-713. 7. Aldersey HM, Whitley R. *Community Ment Health J*. 2015;51(4):467-476. 8. Mutschler C et al. *Community Ment Health J*. 2019;55(8):1255-1274. 9. Smelson DA et al. *Eur J Psychiatry*. 2007;21(2):143-152. 10. Hasson-Ohayon I et al. *Psychosis*. 2016;8(3):250-259. 11. Lee R. The Council of State Governments Justice Center. March 2021.



Meet Our Panelists

Dr. Kathleen A. Moore

Executive Director, Louis de la Parte Florida Mental Health Institute (FMHI) at the University of South Florida

Research Professor, Department of Behavioral Health Science & Practice, University of South Florida

Dr. Courtney Whitt

Inaugural Executive Director, Florida Center for Behavioral Health Workforce in the College of Behavioral and Community Sciences, University of South Florida

Mind the Gaps:

Addressing Gaps in Florida's Behavioral Health System

Thursday, October 9, 2025

Kathleen Moore, Ph.D., Executive Director, Florida Mental Health Institute (FMHI)
Courtney L. Whitt, Ph.D., Executive Director, Florida Center for Behavioral Health Workforce



UNIVERSITY of
SOUTH FLORIDA

**College of Behavioral &
Community Sciences**

Louis de la Parte Florida
Mental Health Institute

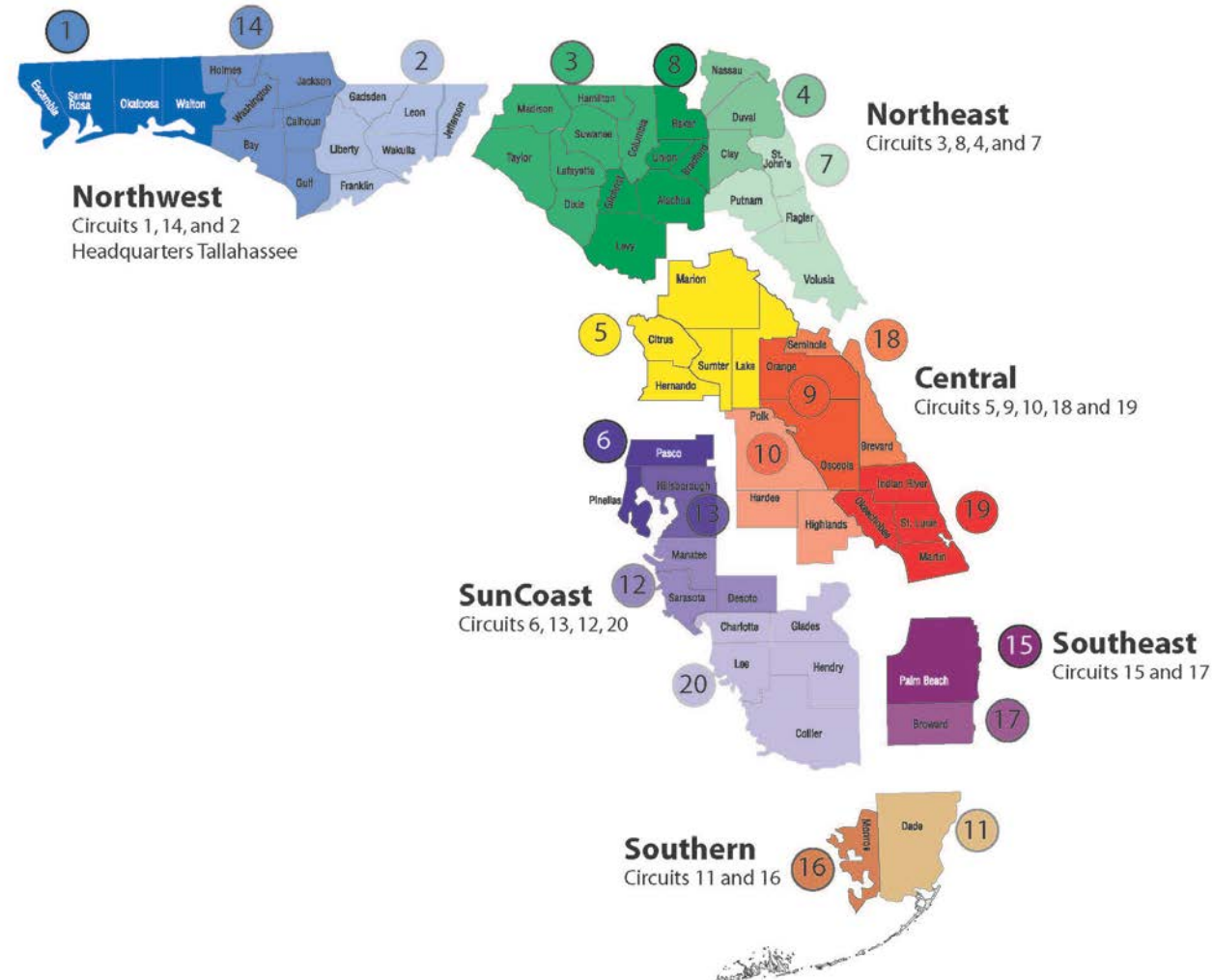


**FLORIDA CENTER FOR
BEHAVIORAL HEALTH
WORKFORCE**
AT THE UNIVERSITY OF SOUTH FLORIDA

Overview of Behavioral Health Gap Analysis (Ernst & Young 2025)

- Study included information on several indicators such as:
 - Current bed allocation
 - Admissions and discharges
 - Average lengths of stay by facility
 - Program type
 - Current/projected demand for civil and forensic inpatient placements
 - Bed needs by facility and placement type
 - Lengths of stay for Medicaid statewide inpatient psychiatric services
- Examined availability of behavioral health community-based services and gaps in the system of care and offered options for service enhancement
- Findings underscore need of a comprehensive approach to addressing behavioral health crisis in Florida and importance of policy and service enhancements to meet needs of the population

Map of Florida Regions and Circuits



Gaps & Opportunities – Bed Capacity

Adults

- 302 facilities ~ 11,318 beds
- 3,058,271 total bed days (statewide)
- Facility Types (Current Total Beds):
 - State Mental Health (forensic and civil) = 3,185
 - Residential Beds = 2,634
 - 149-205 needed
 - Hospital with Psychiatric Beds = 2,573
 - 189 needed
 - Specialty Psych Hospital Beds = 2,000
 - 169 needed

Children & Adolescents

- 93 facilities ~ 1,965 beds
- 485,373 total bed days (statewide)
- Facility Types (Current Total Beds):
 - Residential Beds = 636
 - 72-106 needed
 - Specialty Psych Hospital Beds: 494
 - 57 needed
 - Hospital with Psych Beds = 406
 - 28 needed
 - CSU Beds = 237
 - 26-48 needed

Gaps & Opportunities – Treatment & Community Enabling Supports

- **Supportive Housing**

- Need for state-funded housing vouchers for unhoused persons with a serious and persistent mental illness (SPMI) diagnosis
- Prioritize Housing First Model
- Prioritize access for individuals transitioning out of psychiatric inpatient, CSU, and residential treatment

- **Recovery Supports**

- Florida Clubhouse Model
- Recovery Community Organizations (RCOs)
- Peer-led Support and Programming



Gaps & Opportunities – Treatment & Community Enabling Supports (cont.)

- Expand access to targeted care coordination so individuals with complex behavioral health needs receive:
 - Personalized support
 - Streamlined navigation of services
 - Integrated care plans
- Expand availability of recovery Clubhouses by establishing at least one new location in the Northwest region to offer recovery-oriented supports for individuals living with behavioral health conditions
- Establish at least 29 additional Florida Assertive Community Treatment (FACT) teams statewide to provide community-based services that reduce inpatient admissions and prevent readmissions

Gaps & Opportunities – Workforce Capacity

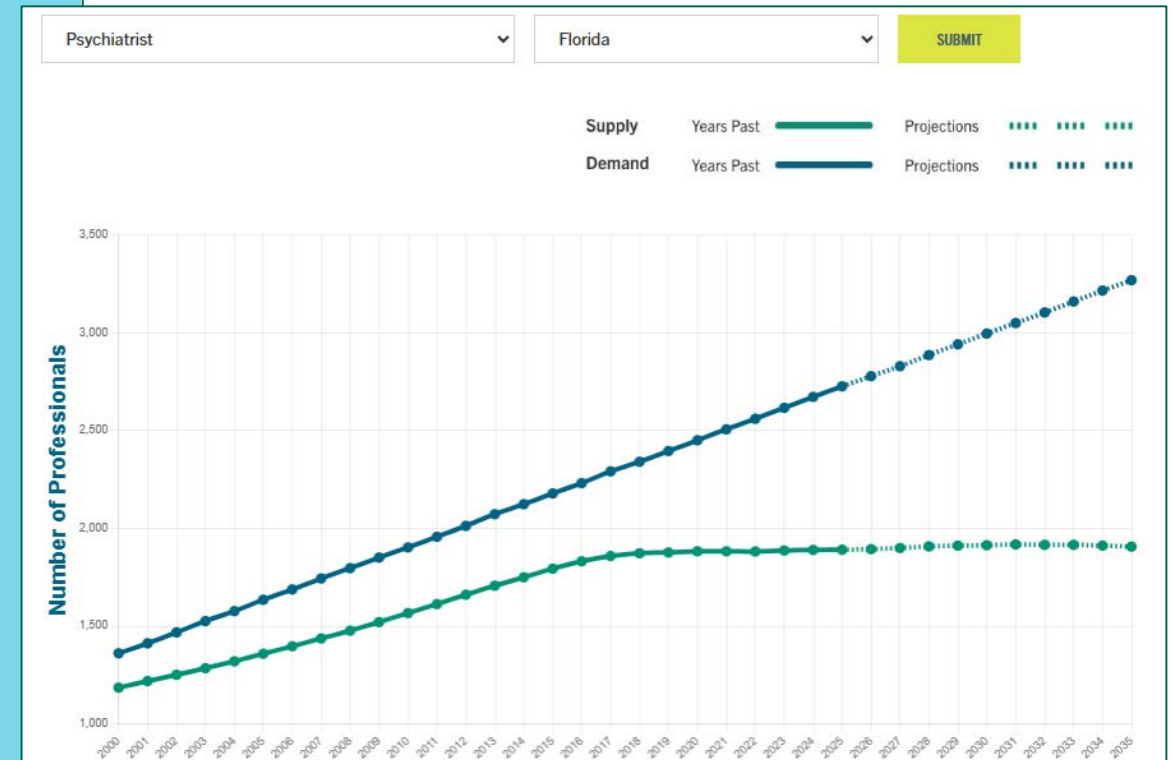
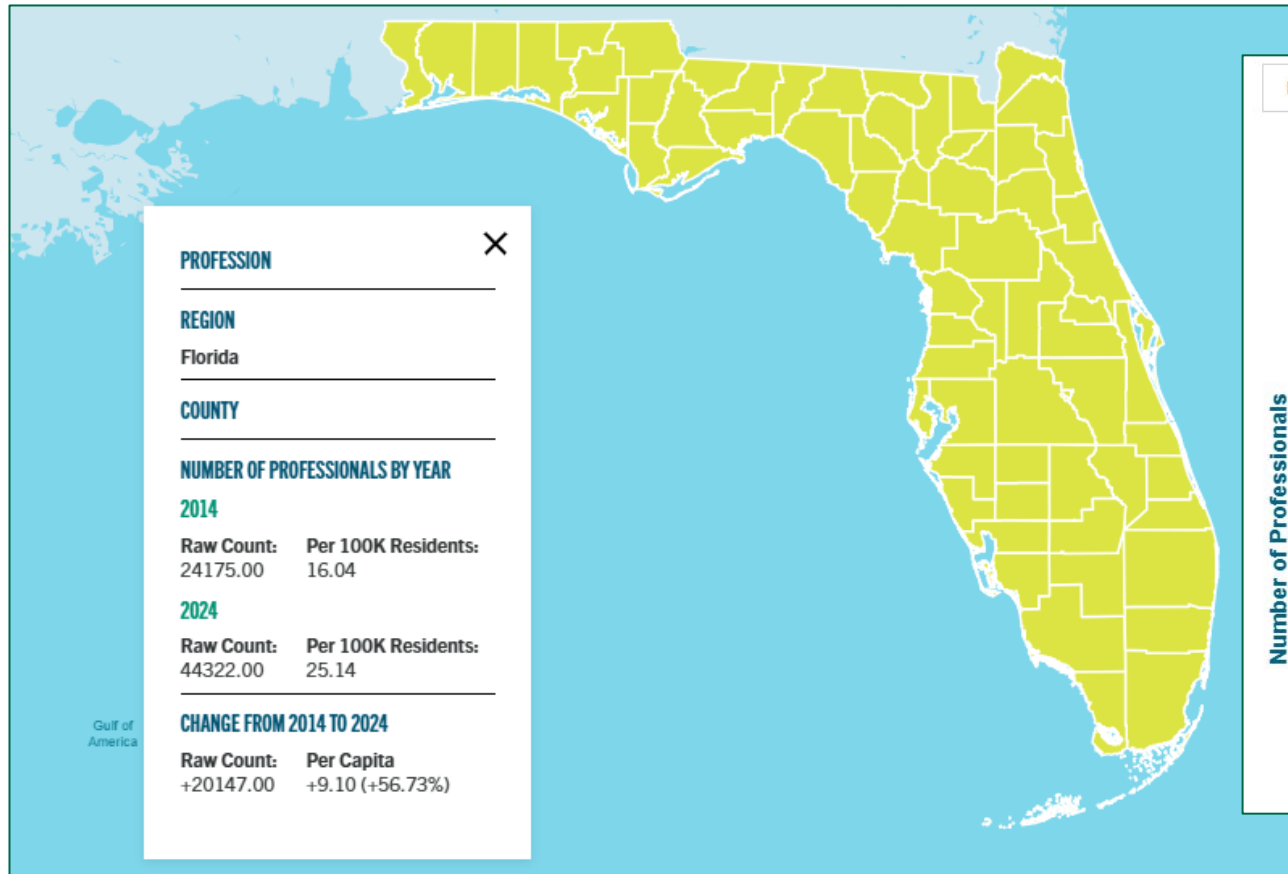
Severe Shortages Statewide

- Patient-to-mental health provider ratio in Florida is 550:1
- 98.5%, or all but one, Florida counties have a partial or complete shortage of mental health professionals
- 25,133 additional mental health professionals are needed to meet statewide demand
- At least 34 psychiatrists are needed to provide sufficient coverage and availability

Recruitment and Retention Issues

- Outdated reimbursement rates limit the ability to attract and retain staff
- High workloads and burnout are reported across settings

Workforce Capacity [FCBHW]



* Includes psychiatrists, PMHNPs, psychologists, LCSWs, LMHCs, and LMFTs.

Workforce Capacity

[What Is Being Done]



**FLORIDA CENTER FOR
BEHAVIORAL HEALTH
WORKFORCE**

AT THE UNIVERSITY OF SOUTH FLORIDA

- Research, Education, Policy Analysis, & Collaboration
- + Behavioral Health Teaching Hospitals
- + FRAME Extension & New TEACH Program

Workforce Capacity

[What Can Be Done]



Why It Matters



Robust and Supported
Workforce



Increased Bed
Capacity



Community Supports



Public Knowledge

Increased Access
to Care



Increased Care
Quality



Improved Continuity
of Care



Increased Care
Adherence



Integrated Behavioral + Medical Care

[What Is Possible]



**COORDINATED
CARE**

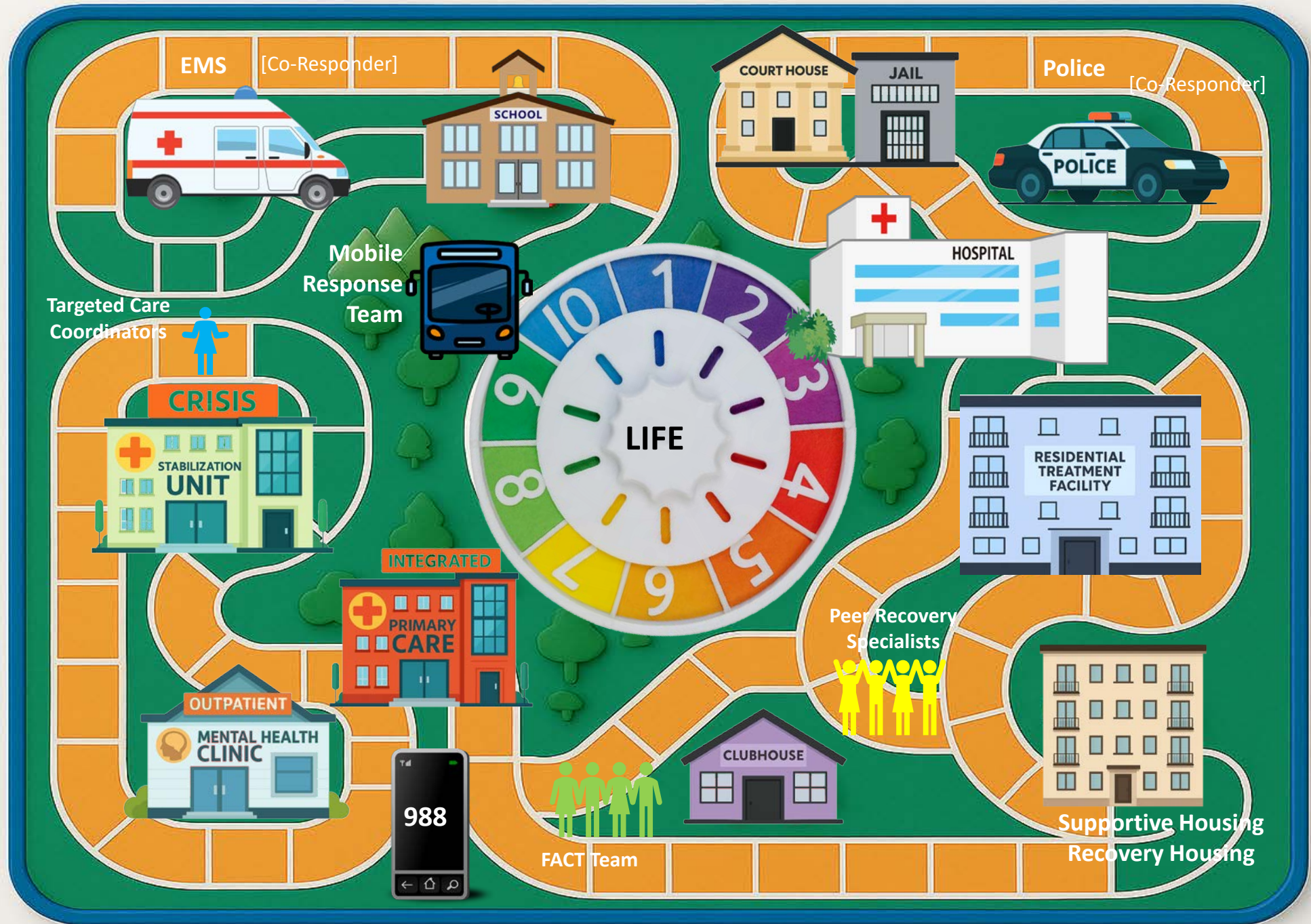


**CO-LOCATED
CARE**



**INTEGRATED
CARE**

*** Reverse Integration**



Sheriff William “Bill” Prummell, Jr.

Representing LEO Response in Behavioral Health



Tristin Murphy Act



We're going to give people treatment options. We're not going to throw them in a cell. We're not going to put them in prison. My goal is to get it passed and to make sure that nothing happens like Tristin again.

Sheriff Bill Prummell
Charlotte County, FL



What Can WE Do?



- Talk about the gaps with your colleagues and other members of your advocacy group
- Mention the Gap Analysis to your legislators
- Tell your story and how gaps in your own community have created barriers to recovery
- Become a member of the Florida Mental Health Advocacy Coalition to join others like you to build a unified voice for family members and peers. Visit www.flmhac.org

Thank you!





THANK YOU AGAIN TO OUR WEBINAR SPONSORS:



**NEWPORT
HEALTHCARE**

www.newporthealthcare.com



www.alkermes.com

Please note that the views expressed by the speakers do not necessarily reflect those of Florida Advocates for Behavioral Health. Moreover, Florida Advocates for Behavioral Health does not endorse any treatments or therapies as expressed by the speakers.



Scan the QR Code to download the complete
**Ernst & Young State of Florida Behavioral
Health Gap Analysis**





Be sure to complete the survey following the webinar to tell us how we did and to suggest future topics that you want to learn about!



If you enjoyed our free webinar and believe in our mission, please visit our website and sign up for future webinars. Please also consider a donation to continue our work:

www.floridaadvocates.org

Florida Advocates for Behavioral Health is a tax-exempt organization under the Internal Revenue Code Section 501(c)3. Contributions to Florida Advocates for Behavioral Health are deductible as qualified charitable contributions.